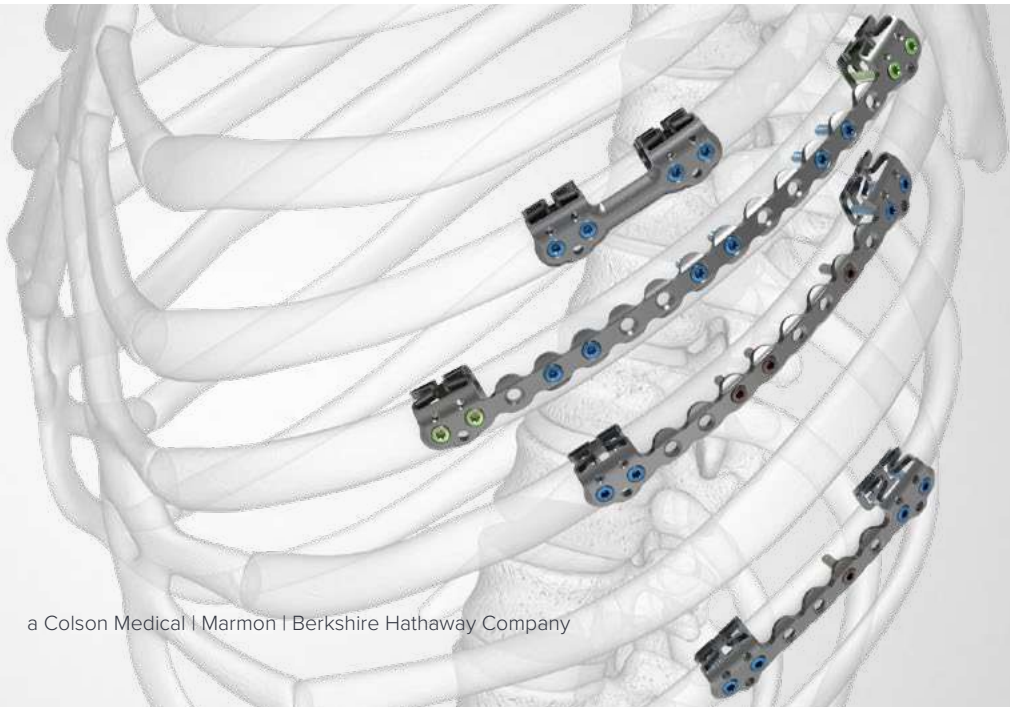


Product Overview



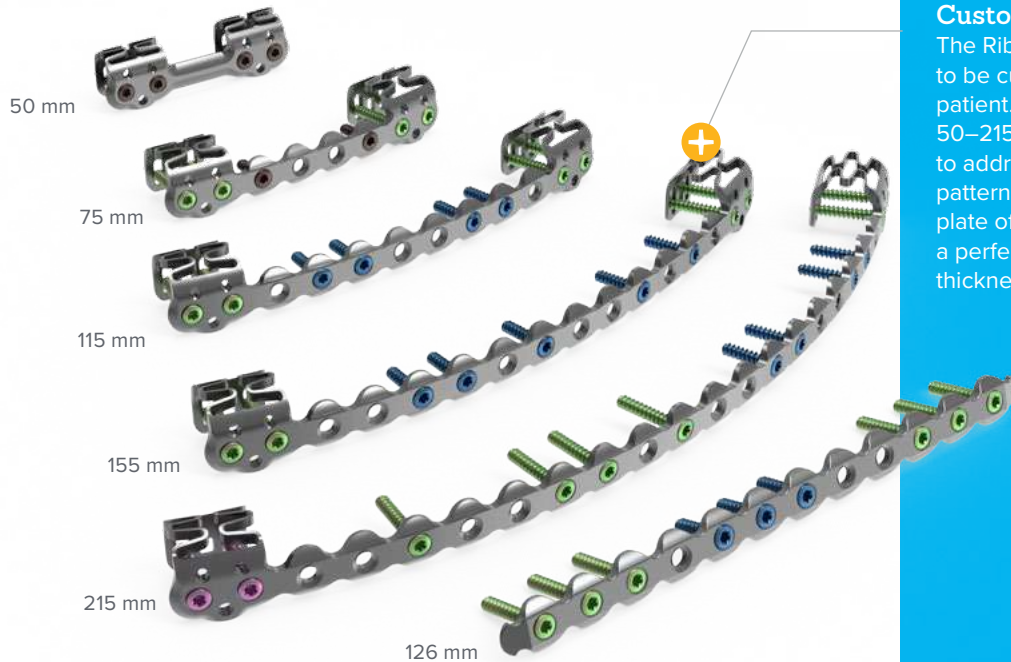


Acumed was the first company to offer a plate specifically designed for rib fixation in 2006.



RibLoc® U Plus Chest Wall Plating System

The Acumed RibLoc U Plus Chest Wall Plating System is intended to stabilize and provide fixation for fractures, fusions, and osteotomies of the ribs, and for reconstructions of the chest wall and sternum. First to market with plates designed for the rib, this comprehensive system includes multiple plate options for varying fracture locations and patterns. Featuring patented U-plate technology, it is the only rib plating system that offers both U-plates and straight anterior plates. Color-coded screws and instrumentation are designed for accurate and efficient installation.



Most Comprehensive System

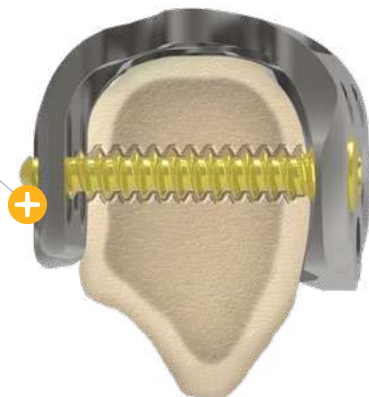
The system includes multiple plate options for varying fracture locations and patterns.

Custom Fit

The RibLoc® U Plus plate was designed to be customizable to the individual patient. The plates range in length from 50–215 mm, that allows the surgeon to address a broad range of fracture patterns. The advanced design of the plate offers a compressible U-clip for a perfect fit to a broad range of rib thicknesses (6–14 mm).

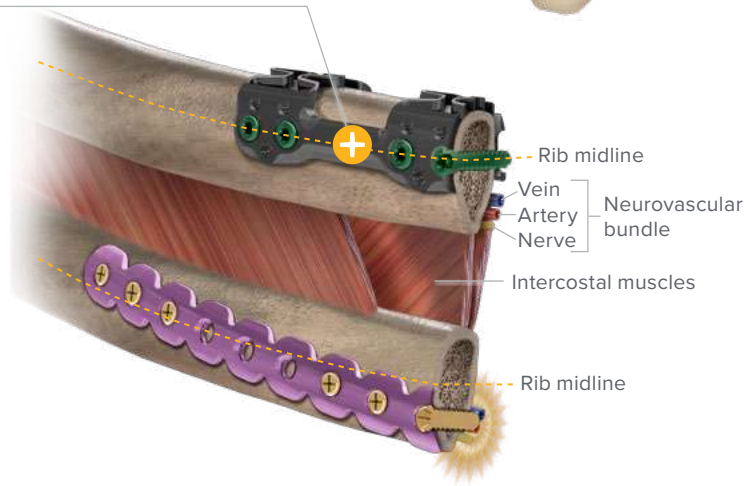
Anterior and Posterior Locking

The U-clips are designed to minimize stress on the rib by distributing physiologic loads over a greater surface area. Once the screws are engaged and fixed to the cortices of the bone, the plate locks both anteriorly and posteriorly.



U Plus Placement on Rib

The patented design of the U Plus plate aids in consistent and straightforward placement through the thickest portion of the rib while avoiding the neurovascular bundle!





Gold – 14 mm

Fuchsia – 12 mm

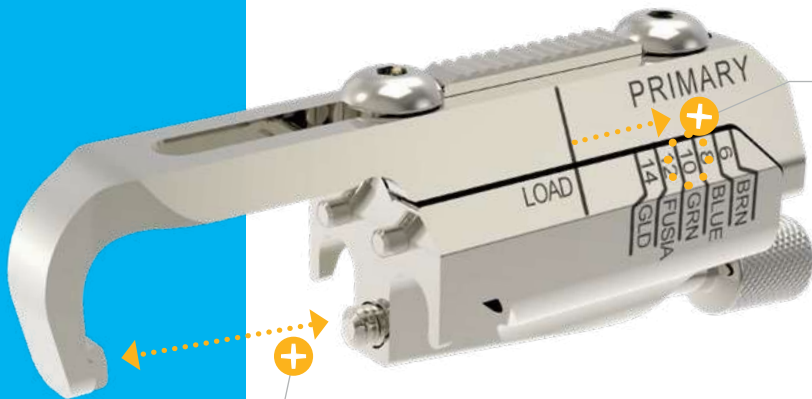
Green – 10 mm

Blue – 8 mm

Brown – 6 mm

Color-coded Screws

Color-coded screws and instrumentation allow for accurate and efficient installation.



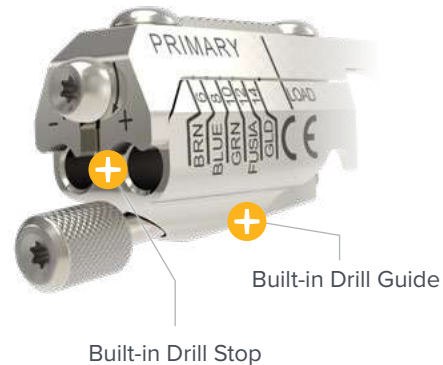
Measures the thickness of the rib for screw sizing



Primary Guide

The Primary Guide aids in fracture reduction once compressed onto the plate and the rib.

Acts as a clamp to hold plate in place and assists in reducing the fracture.

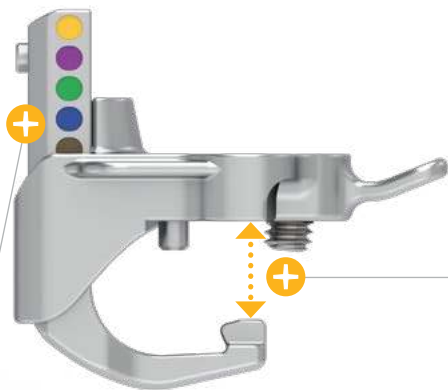


Built-in Drill Guide

Built-in Drill Stop



Color-coding indicates correct screw size



U Plus 90 Low-profile Guide

The low-profile U Plus 90 Guide, Drill Guides, and drill bits provide the same functionality as the standard Primary Guide by facilitating fixation in limited-access locations.

Clamp implant in place and maintain fracture reduction while drilling and installing screws.



Contra-angle allows access while clearing the chest wall



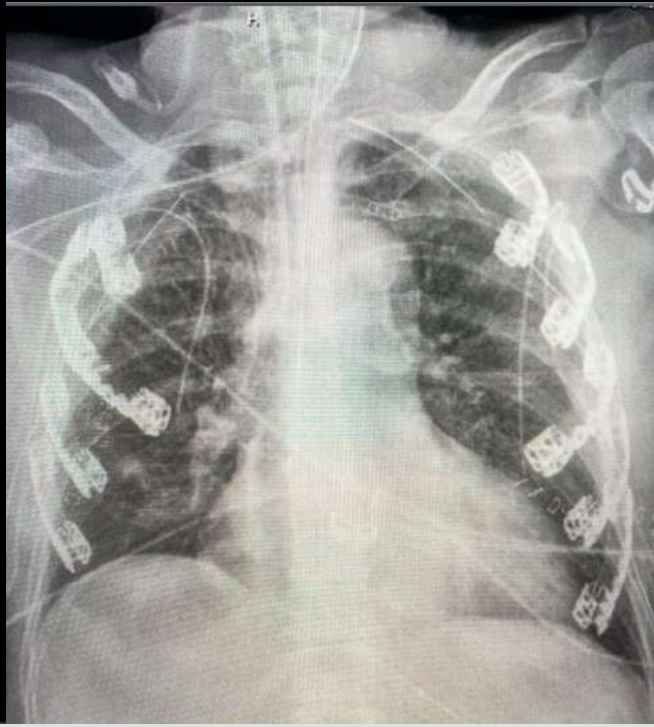
W&H Amadeo Control Unit*

The unit offers power for compressing the plate to the rib, drilling, and driving screws for fixation of subscapular, posterior, and anterolateral fractures through minimally invasive approaches.

*Other power units may be available in different regions.



Left side posterior and posterolateral with subscapular ORIF rib fractures



Bilateral fixation of rib fractures

U Plus Surgical Technique*

Select Plate



Attach Primary
Guides



Compress the
U-clip



*For reference only. For full surgical instructions, see the current RibLoc® U Plus Chest Wall Plating System Surgical Technique (RBL7002)

Select the Plate



Attach Low-Profile
Primary Guides



Compress the
U-clip



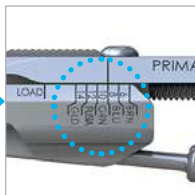
U Plus 90 Surgical Technique†

†For reference only. For full surgical instructions, see the current RibLoc® U Plus 90 Instrumentation Amadeo Surgical Technique (RBL7035)

Drill



Select Screw Size by Indicator



Screw



Remove Primary Guides



Select Drill & Screw Size by Color Guide



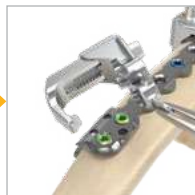
Drill



Screw



Remove Low-Profile Primary Guides





www.acumed.net

Acumed USA Campus
5885 NE Cornelius Pass Road
Hillsboro, OR 97124
+1.888.627.9957

OsteoMed USA Campus
3885 Arapaho Road
Addison, TX 75001
+1.800.456.7779

Acumed Iberica Campus
C. Proci3n, 1
Edificio Oficor
28023 Madrid, Spain
+34.913.51.63.57

RIB00-00-C | Effective: 2023/07 | © 2023 Acumed® LLC

These materials contain information about products that may or may not be available in any particular country or may be available under different trademarks in different countries. The products may be approved or cleared by governmental regulatory organizations for sale or use with different indications or restrictions in different countries. Products may not be approved for use in all countries. Nothing contained on these materials should be construed as a promotion or solicitation for any product or for the use of any product in a particular way which is not authorized under the laws and regulations of the country where the reader is located. Specific questions physicians may have about the availability and use of the products described on these materials should be directed to their particular local sales representative. Specific questions patients may have about the use of the products described in these materials or the appropriateness for their own conditions should be directed to their own physician.

OsteoMed LLC is a wholly owned subsidiary of Acumed LLC.
OsteoMed® is a registered trademark of OsteoMed LLC.

Acumed® and RibLoc® are registered trademarks of Acumed LLC